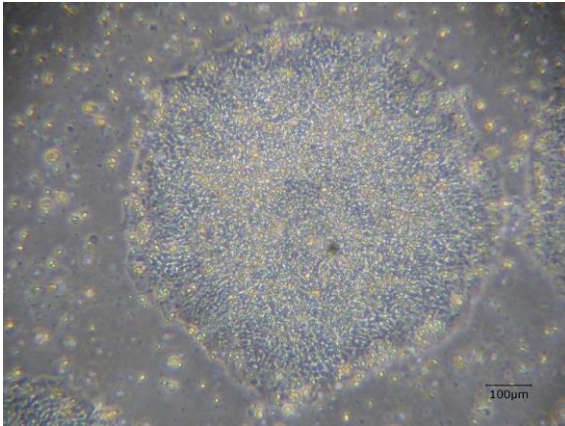
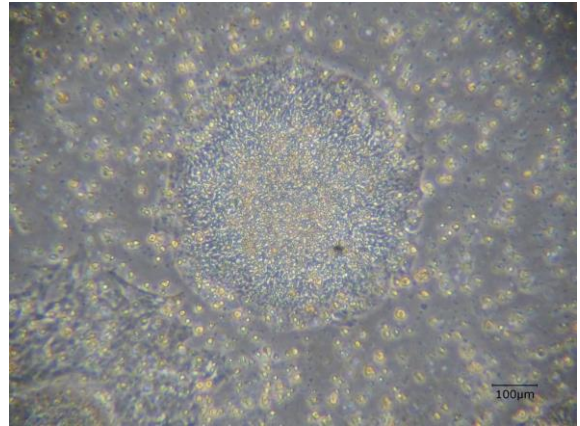


【 CiRA-j-1245 】 Morphology of iPSC colonies

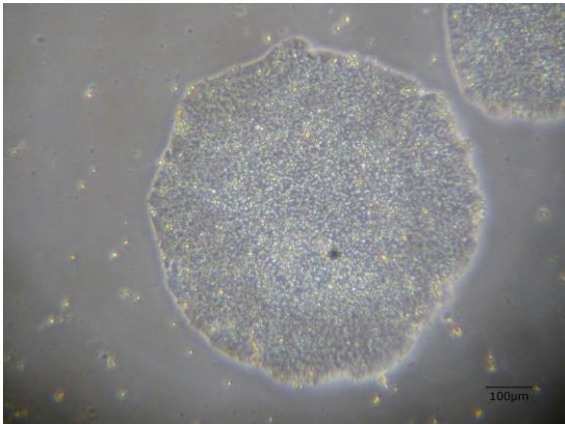
CiRA-j-1245-A: passage-3



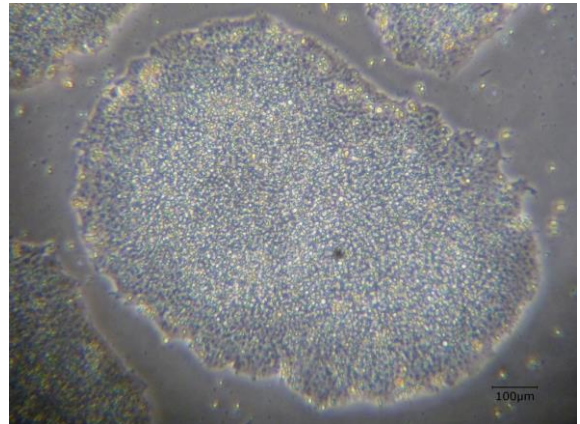
CiRA-j-1245-B: passage-3



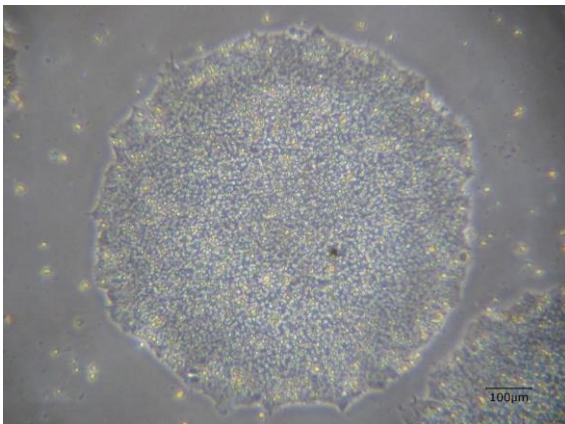
CiRA-j-1245-C: passage-3



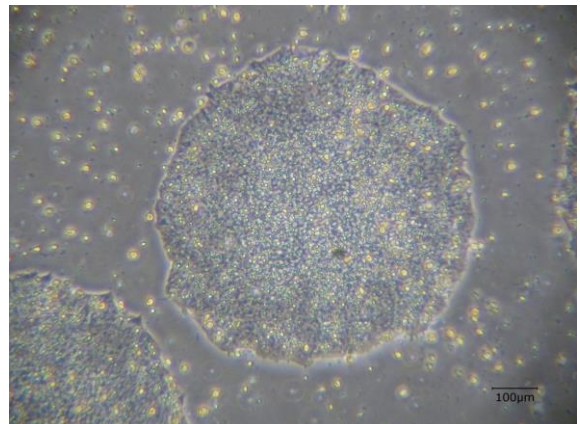
CiRA-j-1245-D: passage-3



CiRA-j-1245-E: passage-3



CiRA-j-1245-F: passage-3



(All images were captured at 4x magnification)